

**NOTICE OF OPEN MEETING OF THE SAN ANTONIO REGIONAL FLOOD  
PLANNING GROUP**

Region 12

08/12/2025

2:00 PM

TAKE NOTICE that a meeting of the San Antonio Regional Flood Planning Group as established by the Texas Water Development Board will be held on Tuesday, August 12, 2025, at 2:00 PM, in-person at the San Antonio River Authority, located at 100 E. Guenther St and virtually at <https://meet.goto.com/985080941>.

**Agenda:**

1. (2:00 PM) Roll Call
2. Public Comments – limit 3 minutes per person
3. Approval of the Minutes from the Previous San Antonio Regional Flood Planning Group Meeting
4. Communications from the Texas Water Development Board (TWDB)
5. Chair Report
6. Committee Report
7. Update on Technical Consultant Work and Schedule
  - a. Update on Outreach Efforts
  - b. Discussion on Community Flood Management Practices
8. Public Comments – limit 3 minutes per person
9. Date and Potential Agenda Items for Next Meeting
10. Adjourn

If you wish to provide written comments prior to or after the meeting, please email your comments to [khayes@sariverauthority.org](mailto:khayes@sariverauthority.org) or physically mail them to the attention of Kendall Hayes at San Antonio River Authority, 100 E. Guenther St., San Antonio, TX, 78204 and include “Region 12 San Antonio Regional Flood Planning Group Meeting” in the subject line.

Additional information may be obtained from: Kendall Hayes, (210) 302-3641, [khayes@sariverauthority.org](mailto:khayes@sariverauthority.org), San Antonio River Authority, 100 E. Guenther St., San Antonio, TX, 78204.

**Meeting Minutes**  
**San Antonio Regional Flood Planning Group Meeting**  
**Tuesday, May 20, 2025**  
**2:00 PM**  
**San Antonio River Authority**

**Roll Call:**

<b><u>Voting Member</u></b>	<b><u>Interest Category</u></b>	<b><u>Present (x) /Absent ( ) / Alternate Present (*)</u></b>
Brian Yanta	<i>Agricultural interests</i>	
David Wegmann	<i>Counties</i>	X
Deborah (Debbie) Reid	<i>Environmental interests</i>	X
Nefi M. Garza	<i>Flood districts</i>	X
Cara C. Tackett	<i>Industries</i>	X
Jeffrey Carroll	<i>Municipalities</i>	
Sabrina Santiago	<i>Municipalities</i>	X
Suzanne B. Scott	<i>Nonprofit</i>	X
John Paul Beasley	<i>Public</i>	
Derek Boese	<i>River authorities</i>	X
Jose Reyes	<i>Small Business</i>	
David Mauk	<i>Water districts</i>	*Doug Schnoebelen
Donovan Burton	<i>Water Utilities</i>	X

<b><u>Non-voting Member</u></b>	<b><u>Agency</u></b>	<b><u>Present(x)/Absent( )/ Alternate Present (*)</u></b>
Carly Rotzler	Texas Parks and Wildlife Department	
Fernando Perez	Texas Division of Emergency Management	X
Jami McCool	Texas Department of Agriculture	X
Jarod Bowen	Texas State Soil and Water Conservation Board	
Kris Robles	General Land Office	X
Tressa Olsen	Texas Water Development Board (TWDB)	*Nick Collins
Susan Roberts	Texas Commission on Environmental Quality	

**Quorum:**

Quorum: **Yes**

Number of voting members or alternates representing voting members present: **9**

Number required for quorum per current voting positions of 13: **7**

*All meeting materials are available for the public at: <http://www.region12texas.org>.*

#### **AGENDA ITEM NO.1: ROLL CALL**

Ms. Kendall Hayes, San Antonio River Authority, called the role and confirmed a quorum.

#### **AGENDA ITEM NO.2: PUBLIC COMMENT – LIMIT 3 MINUTES PER PERSON**

No public comments.

#### **AGENDA ITEM NO.3: APPROVAL OF THE MINUTES FROM THE PREVIOUS SAN ANTONIO REGIONAL FLOOD PLANNING GROUP MEETING (REGION 12)**

Ms. Reid motioned to approve the minutes. Mr. Burton seconded the motion, motion passed.

#### **AGENDA ITEM NO.4: COMMUNICATIONS FROM THE TEXAS WATER DEVELOPMENT BOARD (TWDB)**

Mr. Nick Collins provided an update from TWDB. TWDB has approved funding for the Flood Infrastructure Fund 2025. Prioritized applicants were invited to submit full applications for funding. Allocated funds include roughly \$56.3 million for FMEs and \$182.2 million for FMPs. Discussion ensued regarding TWDB's prioritization and allocation of funding. Chair Boese requested a briefing from TWDB regarding the methodology for selecting the FMEs for funding.

Mr. Collins also announced the release of current conditions data. TWDB will hold a Chairs conference call on May 30<sup>th</sup>.

#### **AGENDA ITEM NO.5: CHAIR REPORT**

Chair Boese reported that, as the Sponsor only received one nomination for the existing vacancy in voting membership, the Executive Committee did not meet to review applications.

#### **AGENDA ITEM NO.6: DISCUSSION AND APPROPRIATE ACTION REGARDING FILLING THE EXISTING VACANCY FOR THE ELECTRIC GENERATING UTILITIES INTEREST GROUP**

Chair Boese stated that one nomination was received to replace Doris Cooksey's position on the voting membership. The nominee was Juan Sandoval, Water Quality and Planning Manager at CPS Energy. Mr. Sandoval was present and introduced himself to the RFPG.

Ms. Scott motioned to select Juan Sandoval to sit on the RFPG voting membership in the Electric Generating Utilities vacancy. Ms. Tackett seconded the motion, motion passed.

#### **AGENDA ITEM NO.7: UPDATE ON TECHNICAL CONSULTANT WORK AND SCHEDULE**

Mr. Ron Branyon, HDR, and the technical consultant team provided an overview of the RFPG's outreach methodology for Cycle II. Discussion ensued regarding targeted outreach and strategies for engaging new stakeholders. Technical Consultants were directed to effectively communicate with Sponsor and RFPG members and request assistance with engagement.

Technical Consultants reviewed the flood management standards, as defined by TWDB, and outlined the region's participation in practices and enforcement.

The RFPG discussed the movement of water policy in the state legislature.

#### **AGENDA ITEM NO.8: PUBLIC COMMENT – LIMIT 3 MINUTES PER PERSON**

No public comments.

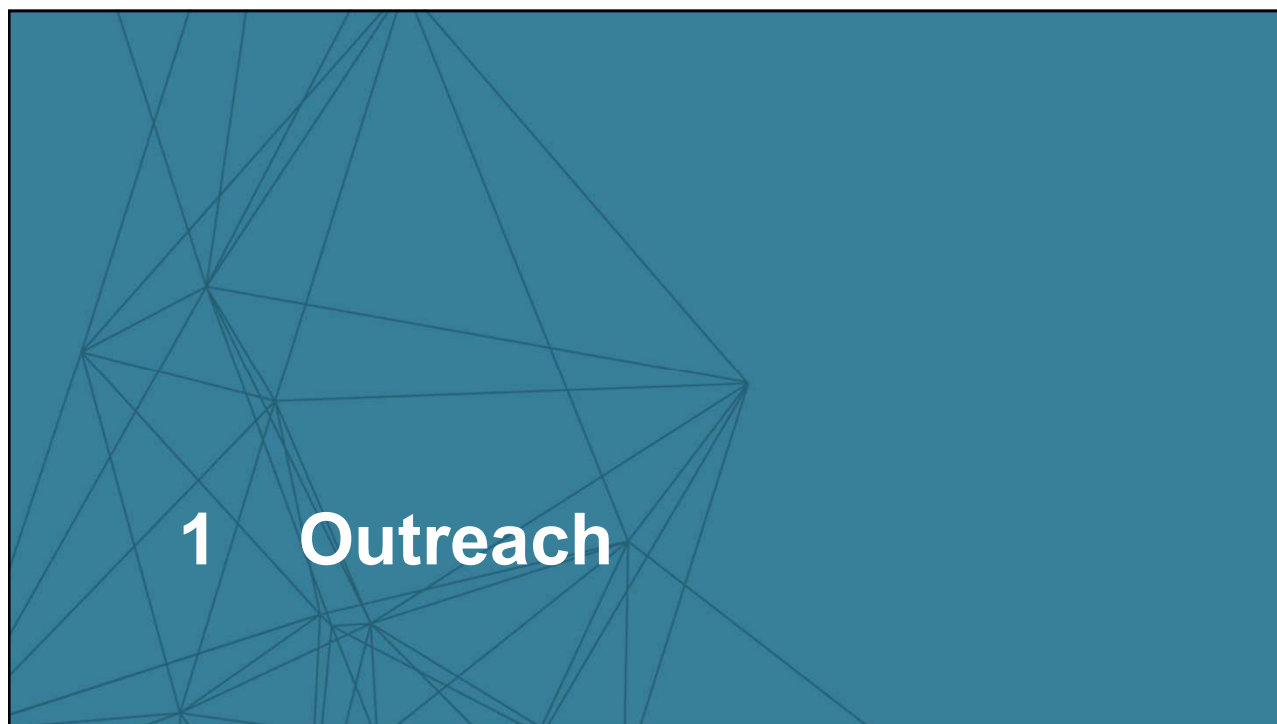
#### **AGENDA ITEM NO.9: DATE AND POTENTIAL AGENDA ITEMS FOR NEXT MEETING**

The Technical Committee will meet on Monday, June 16, 2025, at 3:30 PM.

The RFPG will meet next on Tuesday, August 12, 2025, at 2:00 PM.

#### **AGENDA ITEM NO.10: ADJOURN**

Ms. Reid motioned to adjourn. Mr. Garza seconded the motion, motion passed.



1

# Outreach

Stakeholder Involvement



## Phase 1 - Outreach

- Local Flood Infrastructure
- Completed FMXs
- Flood History
- Flood Maps & Models
- Floodplain Management Practices & Recommendations
- Flood Financing
- Hazard Mitigation & Emergency Planning



## Phase 2 - Outreach

- Public Comment on Flood Hazard Layer
- FMXs Seeking Funding

2

# Outreach (Continued)

## Stakeholder Involvement

### Communities Participating - 45

- |   |   |   |   |
|---|---|---|---|
| <ul style="list-style-type: none"><li>• Atascosa County</li><li>• Bandera County</li><li>• Bandera County Ground Water District and River Authority</li><li>• Bexar County</li><li>• City of Bandera</li><li>• City of Boerne</li><li>• City of Castroville</li><li>• City of Converse</li><li>• City of Fair Oaks Ranch</li><li>• City of Falls City</li><li>• City of Floresville</li><li>• City of Grey Forest</li><li>• City of Karnes City</li></ul> | <ul style="list-style-type: none"><li>• City of Kenedy</li><li>• City of La Coste</li><li>• City of La Vernia</li><li>• City of Runge</li><li>• City of Saint Hedwig</li><li>• City of San Antonio</li><li>• City of Santa Clara</li><li>• City of Somerset</li><li>• City of Stockdale</li><li>• City of Terrell Hills</li><li>• City of Universal City</li><li>• City of Windcrest</li><li>• CPS Energy</li><li>• City of Kirby</li></ul> | <ul style="list-style-type: none"><li>• Helotes</li><li>• Karnes County</li><li>• Marion City</li><li>• Medina County</li><li>• San Antonio River Authority</li><li>• Schertz City</li><li>• The Nature Conservancy</li><li>• Wilson County</li></ul> | <ul style="list-style-type: none"><li>*Region 11<ul style="list-style-type: none"><li>• City of New Braunfels</li><li>• City of Victoria</li><li>• Comal County</li><li>• DeWitt County</li><li>• Garden Ridge</li><li>• Guadalupe County</li><li>• Kerr County</li><li>• Kendall County</li></ul></li><li>*Region 13<ul style="list-style-type: none"><li>• Medina County</li><li>• Atascosa County</li></ul></li><li>*Leads</li></ul> |
|---|---|---|---|

3



4

## Task 3A

### Examples of Floodplain Management and Infrastructure Protection Standards

Type	Standard
Residential and Commercial Buildings	Finished floor elevations 1 foot above 100-year Water Surface Elevation (WSE)
Critical Facilities	Finished floor elevations above the 500-year WSE
Roadways	5-year below top of curb and 100-year no more than 1 foot above the top of curb and contained within the right-of-way
Culverts / Bridges	Minor Roadways: Pass the 25-year and 100-year with no more than 1 foot of overtopping Major Roadways: Pass 100-year
Storm Drainage Systems	Convey 25-year flow underground and 100-year in the right-of-way
Culverts / Bridges	Detain proposed condition peak discharge for the 25 year and 100-year below or equal to the existing condition peak discharge
Dams (Greater than 6 feet in height)	TCEQ requirements
Levees / Floodwalls	FEMA requirements

5

## Task 3A

### TFMA Higher Standards 2024

#### Higher Standards Criteria

- Having freeboard requirements of 1 or more feet above the BFE
- New developments perform detailed studies to establish BFE data when not available
- Stormwater detention
- Fill Restrictions
- Limitations to criteria variance within designated floodways
- Local floodplains identify risk outside FEMA flood zones
- Drainage way protection zones provide resilience against storms that exceed current design standards
- Ultimate development design criteria

[TFMA Documents and Reports - Texas Floodplain Management Association](#)

6

## Task 3A

### Evaluation of Flood Management Practices in SARFP

#### Level of Floodplain Management Practices

- **Strong** – regulation exceeds NFIP standards with enforcement, or community belongs to the CRS
- **Moderate** – some higher standards (1ft+ freeboard, detention requirements, or fill restrictions)
- **Low** – regulations meet the minimum NFIP standards

#### Floodplain Regulation Level of Enforcement

- **High** – enforces ordinance; inspections; issues fines, violations, and Section 1316s; and enforces substantial damage and substantial improvement
- **Moderate** – enforces some ordinance, limited inspections, and is limited fines and violations
- **Low** – provides permitting of development within the floodplain, may not perform inspections, and may not issue fines or violations

#### Out of 65 Flood Regulatory Entities

2 no regulations

25 require freeboard less than 1ft above BFE

2 no freeboard requirements

22 have low management practices

28 have low or no regulation level of enforcement

7

## Task 3A

Table 6 Comparison: Cycle 1 vs Cycle 2

Criteria	Cycle 1	Cycle 2
Minimum Requirements for NFIP	63	63
Higher Standards	31	38
CRS	4	8

8



## Task 3A

RFPG must either Recommend or Adopt Regionwide Floodplain Management Practices

***Recommendation*** = encourages entities

***Adoption*** = requires entities to adhere to practices to have their FMX included in the plan

### **2023 Regional Flood Plan:**

The San Antonio RFPG **recommends** that entities that are not currently NFIP participants should adopt at least the minimum standards and take the necessary steps to become active NFIP participants.

**Table 6 - Existing Floodplain Management Practices**

Entity	Entity Population <sup>A</sup>	Floodplain Management Regulations (Yes/ No/ Unknown)	Adopted minimum regulations pursuant to Texas Water Code Section 16.3145? (Yes/ No)	NFIP Participant (Yes/ No)	CRS Participant (Yes/ No)	Higher Standards Adopted (Yes/ No)	Floodplain Management Practices (Strong/Moderate/ Low/None) <sup>B</sup>	Level of Enforcement of Practices (High/ Moderate/ Low/ None) <sup>C</sup>	Existing Stormwater or Drainage Fee (Yes/ No)
Medina	55619	Yes	Yes	Yes	No	Yes	Strong	High	No
Bexar	2127737	Yes	Yes	Yes	No	Yes	Moderate	High	Yes
Guadalupe	195166	Yes	Yes	Yes	No	Yes	Moderate	Moderate	No
Bandera	879	Yes	Yes	No	No	Yes	Strong	High	No
Comal	201628	Yes	Yes	Yes	No	Yes	Strong	High	No
Kendall	51828	Yes	Yes	Yes	No	Yes	Strong	Moderate	No
Kerr	53900	Yes	Yes	Yes	No	Yes	Moderate	Moderate	No
Aransas	25595	Yes	Yes	Yes	No	Yes	Moderate	Moderate	Yes
Refugio	2757	Yes	Yes	Yes	No	Yes	Strong	Moderate	No
Calhoun	19942	Yes	Yes	Yes	No	Yes	Moderate	None	No
Goliad	1683	Yes	Yes	Yes	No	No	Low	None	No
Victoria	65800	Yes	Yes	Yes	No	No	Strong	Moderate	No
Karnes	15137	Yes	Yes	Yes	No	No	Low	Moderate	No
Atascosa	52783	Yes	Yes	No	No	Yes	Strong	Moderate	No
DeWitt	20252	Yes	Yes	Yes	No	No	Low	None	No
Wilson	446	Yes	Yes	Yes	No	Yes	Strong	Moderate	No
Nordheim	338	No	No	No	No	No	None	None	No
Fair Oaks Ranch	11406	Yes	Yes	Yes	No	Yes	Moderate	Moderate	No
Alamo Heights	7466	Yes	Yes	Yes	No	Yes	Moderate	None	No
Balcones Heights	2689	Yes	Yes	No	No	No	Low	None	No
Castle Hills	3907	Yes	Yes	Yes	No	Yes	Moderate	None	No
China Grove	1131	Yes	Yes	Yes	No	Yes	Moderate	None	No
Converse	30321	Yes	Yes	Yes	Yes	Yes	Strong	High	Yes
Elmendorf	2398	Yes	Yes	Yes	No	No	Strong	Moderate	No
Terrell Hills	5059	Yes	Yes	Yes	No	No	Low	None	No
Windcrest	5759	Yes	Yes	Yes	Yes	Yes	Strong	High	No
Grey Forest	488	Yes	Yes	Yes	No	No	Low	High	No
Hill Country Village	947	Yes	Yes	Yes	No	No	Low	None	No
Hollywood Park	3074	Yes	Yes	Yes	No	No	Low	None	No
Kirby	8039	Yes	Yes	Yes	No	Yes	Moderate	Moderate	Yes
Leon Valley	11337	Yes	Yes	Yes	Yes	Yes	Strong	None	No
Live Oak	15988	Yes	Yes	Yes	Yes	Yes	Strong	Moderate	No
Cibolo	36374	Yes	Yes	Yes	No	No	Low	None	No
Bulverde	6970	Yes	Yes	Yes	No	Yes	Moderate	None	No
New Braunfels	110958	Yes	Yes	Yes	Yes	Yes	Strong	Moderate	No
Schertz	43239	Yes	Yes	Yes	No	Yes	Moderate	High	Yes
Karnes City	3112	Yes	Yes	Yes	No	Yes	Moderate	High	Yes

**Table 6 - Existing Floodplain Management Practices**

Entity	Entity Population <sup>A</sup>	Floodplain Management Regulations (Yes/ No/ Unknown)	Adopted minimum regulations pursuant to Texas Water Code Section 16.3145? (Yes/ No)	NFIP Participant (Yes/ No)	CRS Participant (Yes/ No)	Higher Standards Adopted (Yes/ No)	Floodplain Management Practices (Strong/Moderate/ Low/None) <sup>B</sup>	Level of Enforcement of Practices (High/ Moderate/ Low/ None) <sup>C</sup>	Existing Stormwater or Drainage Fee (Yes/ No)
Runge	946	Yes	Yes	No	No	No	Low	High	No
Boerne	21774	Yes	Yes	Yes	Yes	Yes	Strong	High	No
Olmos Park	2161	Yes	Yes	Yes	No	No	Low	None	No
Floresville	8306	Yes	Yes	Yes	No	Yes	Moderate	Moderate	No
La Coste	1206	Yes	Yes	Yes	No	Yes	Moderate	Moderate	No
Marion	1074	Yes	Yes	Yes	No	No	Low	None	No
Universal City	20028	Yes	Yes	Yes	No	Yes	Moderate	None	No
New Berlin	747	Yes	Yes	Yes	No	No	Low	None	No
Falls City	512	Yes	Yes	Yes	No	No	Low	Moderate	No
Kenedy	3403	Yes	Yes	Yes	No	Yes	Moderate	Moderate	No
Goliad	1683	Yes	Yes	Yes	No	No	Low	None	No
Shavano Park	3722	Yes	Yes	Yes	No	Yes	Moderate	None	No
Helotes	9952	Yes	Yes	Yes	No	Yes	Moderate	High	No
Somerset	1806	Yes	Yes	Yes	No	No	Low	None	No
St. Hedwig	2319	Yes	Yes	Yes	Yes	Yes	Strong	High	Yes
Austwell	114	Yes	Yes	No	No	No	Low	None	No
Seadrift	1009	Yes	Yes	Yes	No	Yes	Moderate	None	No
La Vernia	1405	Yes	Yes	Yes	No	Yes	Moderate	Moderate	Yes
Poth	1968	Yes	Yes	Yes	No	No	Low	None	No
Stockdale	1470	Yes	Yes	Yes	No	No	Low	Moderate	No
Sandy Oaks	5480	No	No	No	No	No	None	None	No
Garden Ridge	4359	Yes	Yes	Yes	No	No	Low	None	No
Selma	11748	Yes	Yes	Yes	No	Yes	Moderate	None	No
Santa Clara	803	Yes	Yes	Yes	No	No	Low	None	No
Von Ormy	1194	Yes	Yes	Yes	No	No	Low	Moderate	No
San Antonio	1495295	Yes	Yes	Yes	Yes	Yes	Strong	High	Yes
Castroville	3141	Yes	Yes	Yes	No	Yes	Moderate	High	Yes
Bandera	879	Yes	Yes	No	No	Yes	Strong	Moderate	No

<sup>A</sup> RFPGs should report the overall population of the entity regardless of whether the entity crosses regional boundaries.

<sup>B</sup> The following may serve as a guide for evaluating practices:

- None (no floodplain management practices in place);
- Low (regulations meet the minimum NFIP standards);
- Moderate (some higher standards, such as freeboard, detention requirements, or fill restrictions);
- Strong (e.g., significant regulations that exceed NFIP standard with enforcement, or community belongs to the Community Rating System).

<sup>C</sup> The following may serve as a guide for evaluating enforcement:

- high – actively enforces the entire ordinance, performs many inspections throughout construction process, issues fines, violations, and Section 1316s where appropriate, and enforces substantial damage and substantial improvement;
- moderate – enforces much of the ordinance, performs limited inspections and is limited in issuance of fines and violations;
- low – provides permitting of development in the floodplain, may not perform inspections, may not issue fines or violations;
- none – does not enforce floodplain management regulations.