

NOTICE OF OPEN MEETING OF THE SAN ANTONIO REGIONAL FLOOD PLANNING GROUP
TECHNICAL SUBCOMMITTEE

Region 12 San Antonio RFPG

04/21/2022

9:00 AM

TAKE NOTICE that a meeting of the Technical Subcommittee of the San Antonio Regional Flood Planning Group as established by the Texas Water Development Board will be held on Thursday, April 21, 2022, at 9:00 AM, in-person at the San Antonio River Authority, located at 201 W. Sheridan St and virtually at <https://meet.goto.com/663051757>.

Agenda:

1. (9:00 AM) Roll-Call
2. Public comments – limit 3 minutes per person
3. Discussion on Task 4B & 5 Methodologies
 - a. Identification and Evaluation of Potential and Recommended FME's, FMP's and FMS's
4. Public comments – limit 3 minutes per person
5. Date and Potential Agenda Items for Next Meeting
6. Adjourn

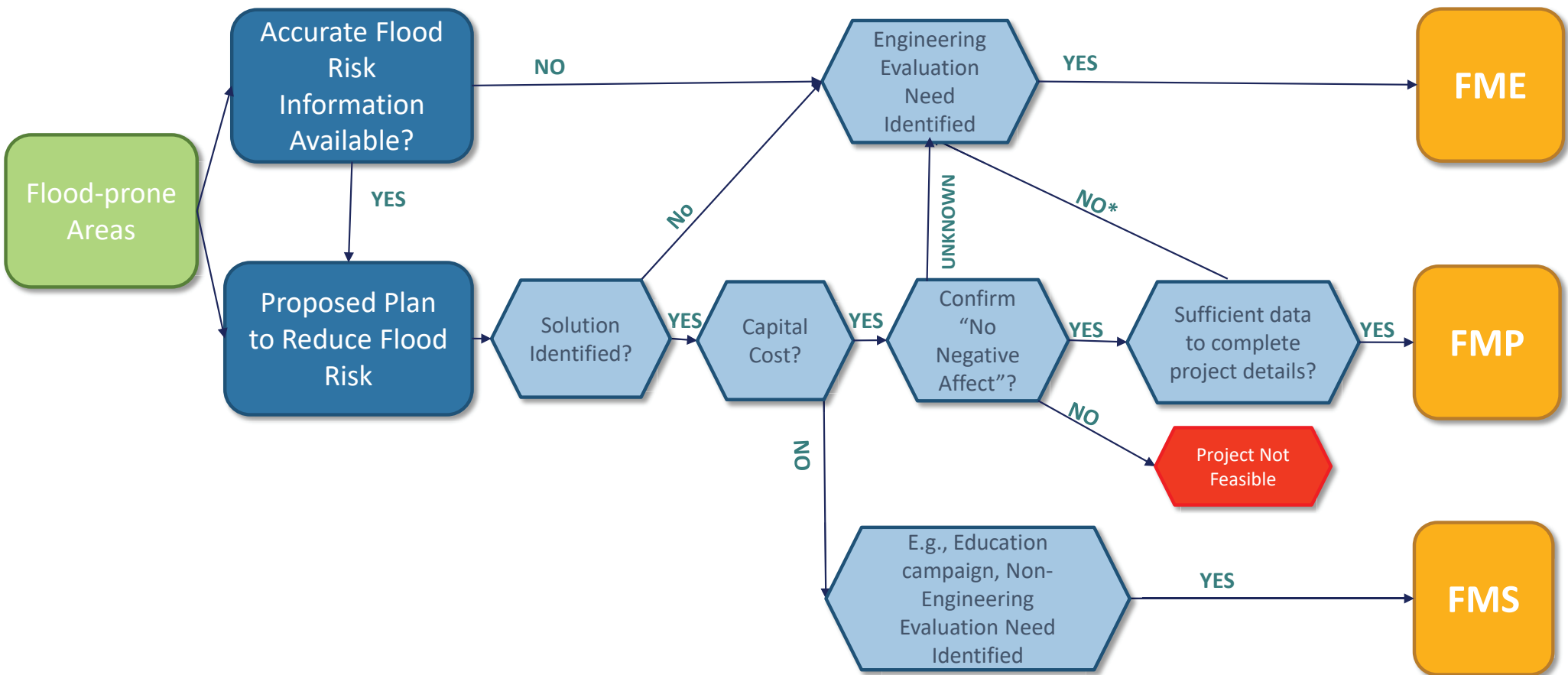
If you wish to provide written comments prior to or after the meeting, please email your comments to khayes@sariverauthority.org or physically mail them to the attention of Kendall Hayes at San Antonio River Authority, 201 W. Sheridan, San Antonio, TX, 78204 and include “Region 12 San Antonio Flood Planning Group Meeting” in the subject line of the email.

Additional information may be obtained from: Kendall Hayes, (210) 302-3641, khayes@sariverauthority.org, San Antonio River Authority, 201 W. Sheridan, San Antonio, TX, 78204.

| Community | County | Source Name | Project Title | Project Location | Project Type | Project Description | Step 1 | | | Step 2-1: FMP | | | | Step 2-2: FME | | | Step 2-3: FMS | | | Step 3 | Step 4: Project Details/Feasibility | | | | | Step 4-1: Additional Project Details | | | | | |
|----------------|--------|---|--|---|--|---|--|-------------------------------------|---|---------------------|----------------------------------|-------------------------------------|--------------------------|--|---------------------|--|--|---------------------|--|---|-------------------------------------|--------------|---------------------------------|---|------------------|--|--|--|--------|--------|--------|
| | | | | | | | Addresses flood problem with DA > 1 mi^2 (Y/N/U) | Reduces 100-year flood risk (Y/N/U) | RFGP Allows Exception for not meeting; - Problem Area Size - Flood Risk Reduction (Y/N) | FMP Screening (Y/N) | STRUCTURAL Sufficient Data (Y/N) | NONSTRUCTURAL Sufficient Data (Y/N) | No Negative Effect (Y/N) | Sufficient Project Details (BCA, Cost Estimate, Struc/Pop/Crit.Facilities at Risk) | FME Screening (Y/N) | Has a Planning Level Cost Estimate (Y/N) | Identifies Structures, Population, and Critical Facilities at Risk (Y/N) | FMS Screening (Y/N) | Has a Planning Level Cost Estimate (Y/N) | Estimated Flood Risk or Flood Reduction (Y/N) | Associated Goals | Project Cost | Operations and Maintenance Cost | Benefit-Cost Ratio (must be > 1) (FMP Only) | Sponsor Verified | Atlas 14 | Pre-Project Level of Service (FMP Only) | Post-Project Level of Service (FMP Only) | FMP_ID | FME_ID | FMS_ID |
| | | | | | | | | | | | If "No" consider FME | If "No" consider FME | If "No" consider FME | If "No" consider FME | | If "No", consider funding from Task 11 | If "No", cant recommend FME | | If "No", consider FME | If "No", consider FME | | | | | | | | | | | |
| City of Boerne | Bexar | Boerne Master Drainage Plan | PROJECT 3 - CURREY CREEK REGIONAL DETENTION FACILITY | Currey Creek | Regional Detention, Infrastructure | Inline detention facility with additional stormdrain improvments | Y | Y | | Y | Y | | Y | Y | | | | | | 12000013, 12000033 | \$9,400,000 | | 2.79 | City of Boerne | Atlas 14 | The project is expected to remove 118 structures from the 10-year floodplain, 162 structures from the 50-year floodplain, 174 structures from the 100-year floodolain. and | The project is expected to remove 118 structures from the 10-year floodplain, 162 structures from the 50-year floodplain, 174 structures from the 100-year floodolain. and | 1.2E+08 | | | |
| City of Boerne | Bexar | Boerne Master Drainage Plan | PROJECT 5D- OLD SAN ANTONIO STREET AT MENDER CREEK | OLD SAN ANTONIO STREET AT MENDER CREEK | Regional Channel Improvements, Bridge Improvements | Elevated bridge, channel grading, street reconstruction, curb, sidewalks, and driveways | Y | Y | | Y | Y | | Y | N | Y | Y | Y | | | 12000033 | \$3,700,000 | | None | City of Boerne | Atlas 14 | 10-year | 100-year | 1.2E+08 | | | |
| City of Boerne | Bexar | Boerne Master Drainage Plan | PROJECT 14- EAST BOERNE REGIONAL LID | Cibolo Creek and Boerne Middle School south | Nature Based Project | Proposed inline extended detention facility that provides water quality benefits to the urbanized tributary of Cibolo Creek and properties downstream of Scenic Loop Road | Y | Y | | Y | Y | | Y | N | Y | Y | Y | | | 12000035 | \$700,000 | | None | City of Boerne | Atlas 14 | | | 1.2E+08 | | | |
| Wilson County | Wilson | Karnes and Wilson Counties Hazard Mitigation Plan | Wilson 7 - Upgrade low water crossings | Wilson County | Crossing Improvements | Upgrade Infrastructure At Low Water Corssings to provide unimpeded access during a 100-year base flood event to facilitate evacuation and response by emergency vehicles | Y | | Y | | | | | | Y | Y | Y | | | 12000034 | \$1,200,000 | | N/A | Wilson County Road & Bridge | Atlas 14 | | | 1.2E+08 | | | |
| Wilson County | Wilson | Karnes and Wilson Counties Hazard Mitigation Plan | Erosion at CR 401 and Cibolo Creek | Wilson County | Engineering project planning | Phase I: Engineering study of design solutions to erosion of CR 401 at Cibolo Creek. Phase II: Implementation of stabilization project to address stream incision and wrosion CR 401 at Cibolo Creek. | Y | | Y | | | | | | Y | Y | Y | | | 12000034 | \$300,000 | | N/A | County Commissioners | Atlas 14 | | | 1.2E+08 | | | |
| Wilson County | Wilson | Karnes and Wilson Counties Hazard Mitigation Plan | Wilson 4 - Stormwater Managemen t Plan | Wilson County | Flood Study | Develop flood hazard information by collection information, high water marks, and conduct engineering studies to develop the 100-year and 500-year flood elevation levels | Y | | Y | | | | | | Y | Y | Y | | | 12000011, 12000015 | \$200,000 | | N/A | SARA | Atlas 14 | | | 1.2E+08 | | | |

| | | | | | | | | | | | | | | | | | | | | | | | | | | | | | | | | |
|---------------|--------|---|--|---------------|-----------------------------|---|--|--|---|--|--|--|--|--|--|--|--|---|---|---|----------|----------|--|-----|--------------------------------|-----|--|--|--|--|--|---------|
| Wilson County | Wilson | Karnes and Wilson Counties Hazard Mitigation Plan | Public awareness and education on all hazards | Wilson County | Education and Outreach | Post educational material on the effects of hazards to homeowners on the county website and Facebook sites. Publish articles concerning hazards in the local newspaper. Provide educational handouts at all county offices and satellite buildings. | | | Y | | | | | | | | | Y | Y | Y | 12000034 | \$10,000 | | N/A | Office of Emergency Management | N/A | | | | | | 1.2E+08 |
| Wilson County | Wilson | Karnes and Wilson Counties Hazard Mitigation Plan | Improve communication systems between County and Jurisdictions | Wilson County | Flood Warning and Readiness | Improve interoperability of communication systems between first responder agencies and jurisdictions in Wilson County | | | Y | | | | | | | | | Y | Y | Y | 12000009 | \$50,000 | | N/A | Wilson County Sherifs Office | N/A | | | | | | 1.2E+08 |
| Wilson County | Wilson | Karnes and Wilson Counties Hazard Mitigation Plan | Wilson 5 - ICS Implementation | Wilson County | Flood Warning and Readiness | Implement incident comand system (ICS) training and exersise. Conduct "tabletop exercises" with emergency response personnel from multiple agencies, to determine further mitigation opportunities and response vulnerabilities. | | | Y | | | | | | | | | Y | Y | Y | 12000009 | \$10,000 | | N/A | Wilson County | N/A | | | | | | 1.2E+08 |

FME, FMP, FMS Flow Chart



*Please refer to Exhibit C Figure 5: FMP flowchart.

Figure 5: FMP flowchart

Exhibit C, page 61 of 135

