



RIVER BASIN FLOOD STUDY

WESTERN REGION

Texas General Land Office

Community Development and Revitalization (GLO-CDR)

Flood Studies within Combined River Basins

Study Overview

Agenda



RIVER
BASIN
FLOOD
STUDY
WESTERN
REGION

1. Introduction of the Study and Team
2. Study Timeline and Approach
3. Coordinating Our Approaches
4. Identification of Project Funding
5. Next Steps
6. Q&A

Study Overview

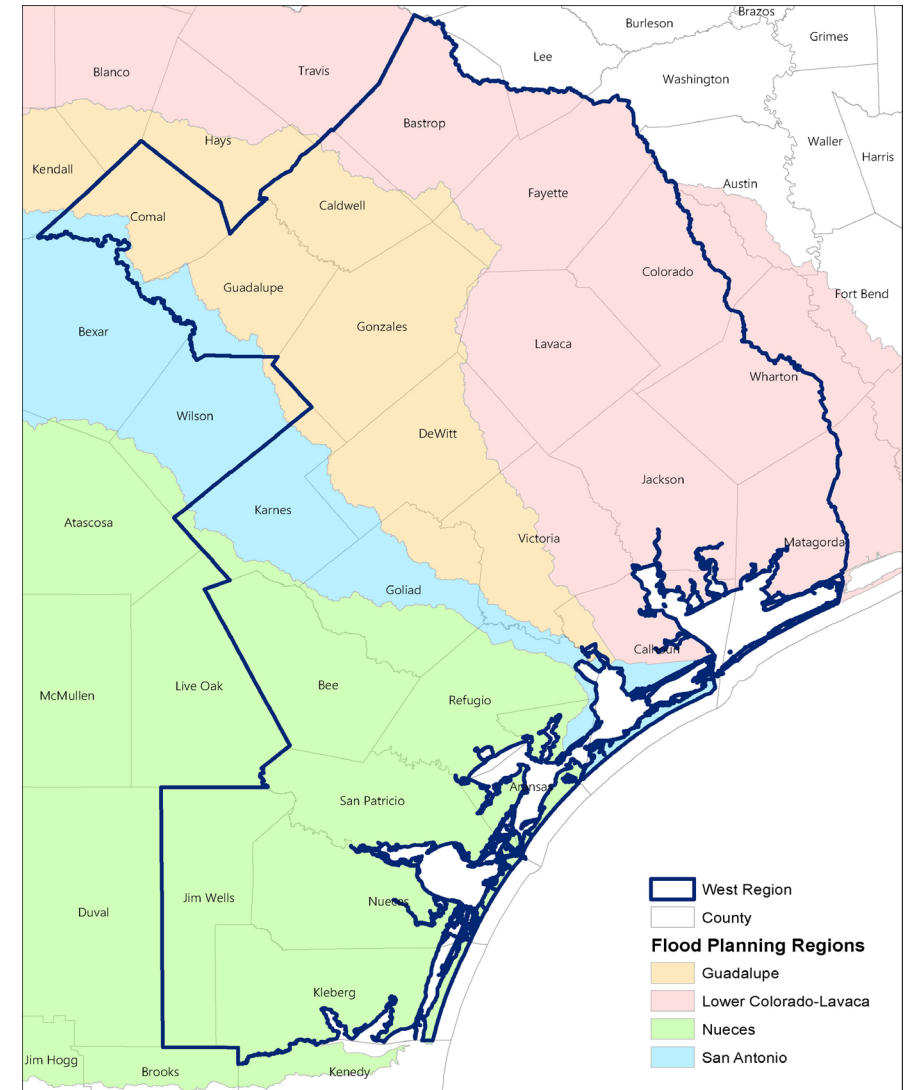


Goals

- Evaluate flood risks
- Develop cost-effective flood mitigation strategies
- Identify of funding sources for mitigation projects

Benefits

- Collect local data and detailed flood risk information building on data and projects you may have already identified
- Support planning and feasibility studies for local and regional risk reduction projects
- Increase community disaster resilience



GLO Planning Team



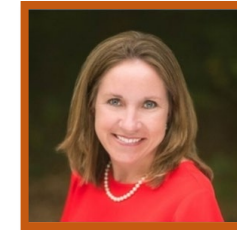
**RIVER
BASIN
FLOOD
STUDY**
WESTERN
REGION



Jet Hays

Deputy Director of Integration

Jet.Hays.GLO@recovery.texas.gov



Colleen Jones

Director of Planning

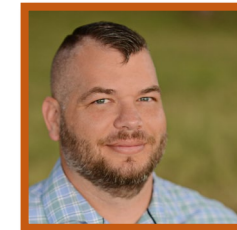
Colleen.Jones.GLO@recovery.texas.gov



Shonda Mace

Regions – West/LRGV

Shonda.Mace.GLO@recovery.texas.gov



Tyler Payne

Regions – Central/East

Tyler.Payne.GLO@recovery.texas.gov

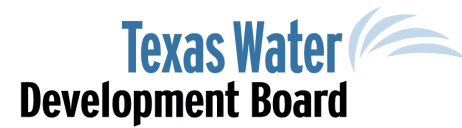
Delivery Partners



RIVER
BASIN
FLOOD
STUDY
WESTERN
REGION



FEMA



Strategic Framework



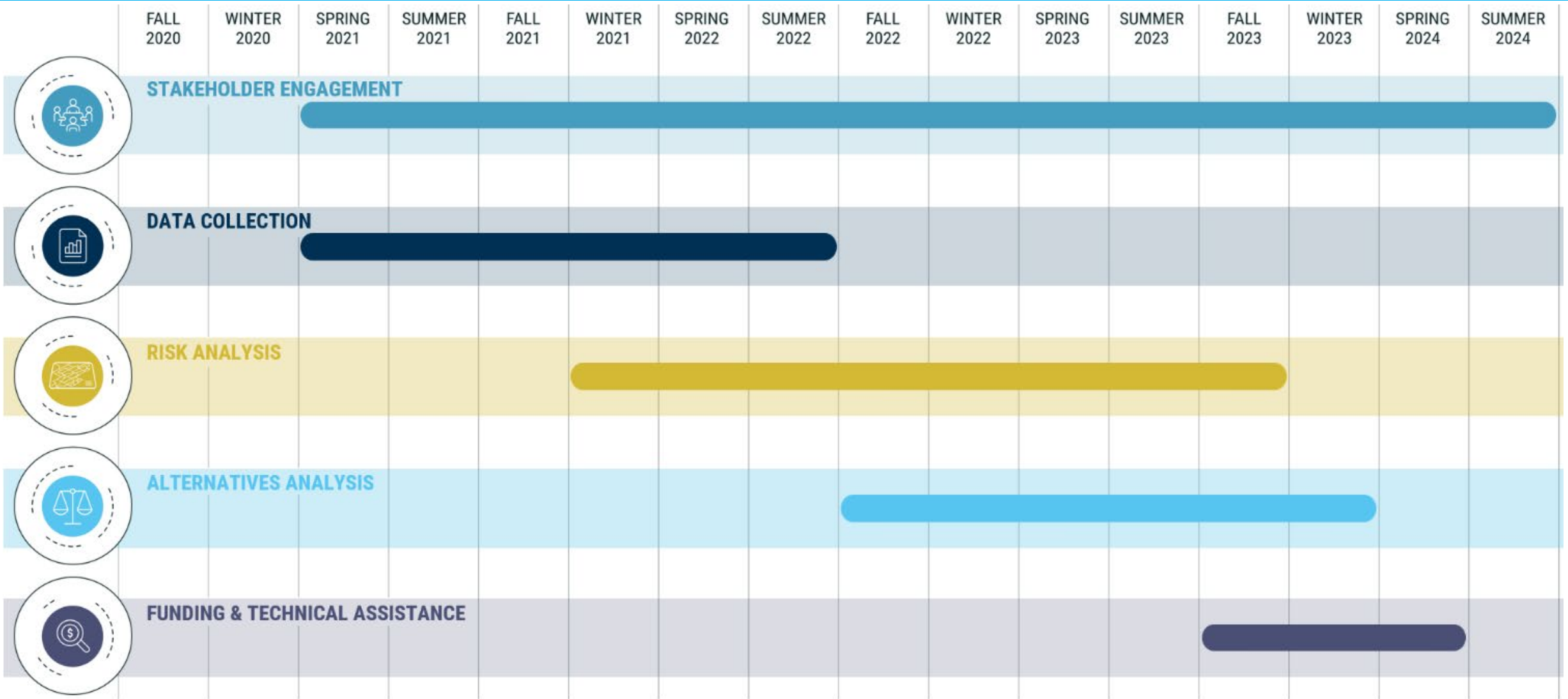
**RIVER
BASIN
FLOOD
STUDY**
WESTERN
REGION



Study Timeline



**RIVER
BASIN
FLOOD
STUDY**
WESTERN
REGION



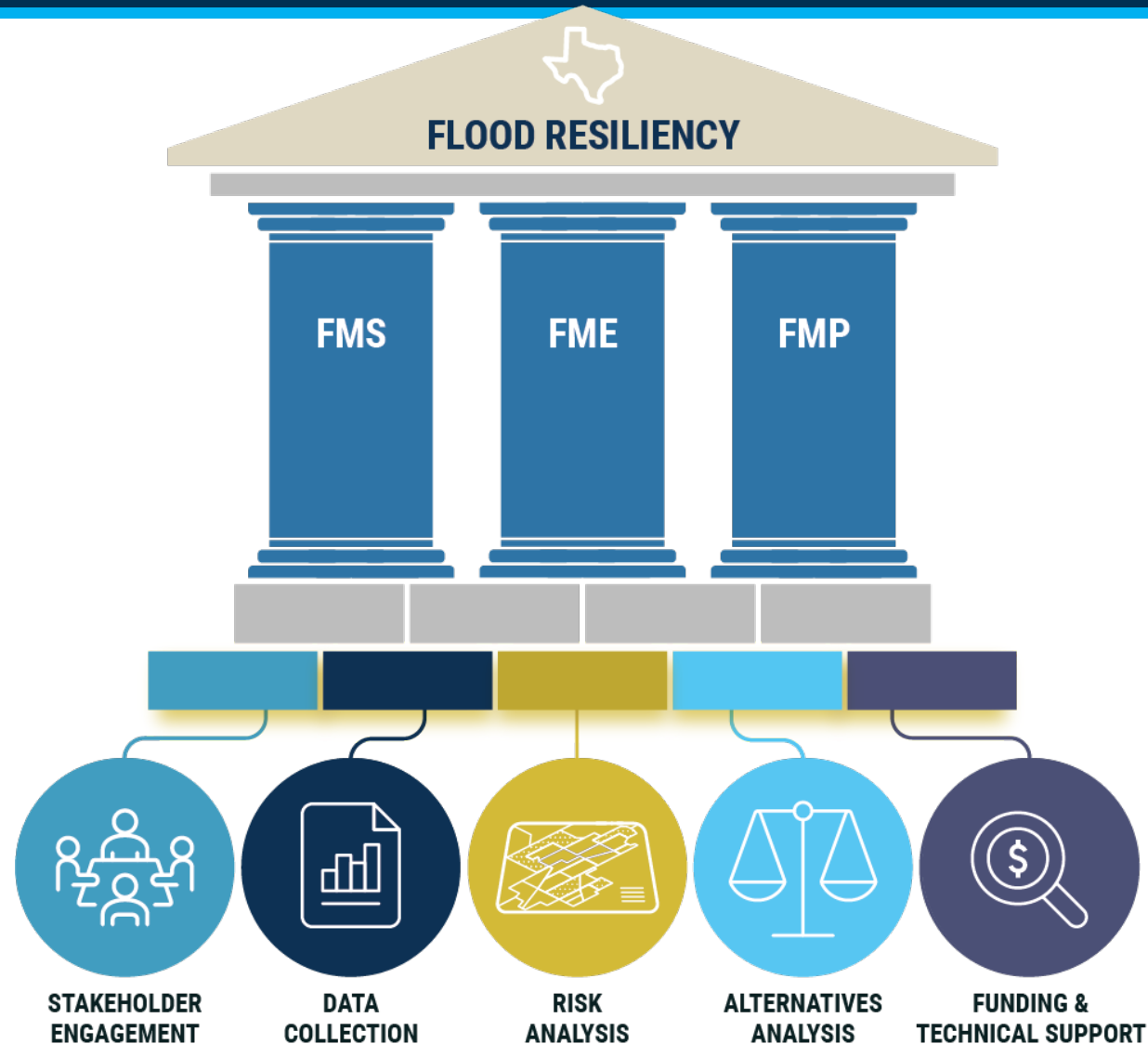
A Coordinated Approach



**RIVER
BASIN
FLOOD
STUDY**
WESTERN
REGION

**REGIONAL FLOOD
PLANNING GROUPS**

**RIVER BASIN
FLOOD STUDY**



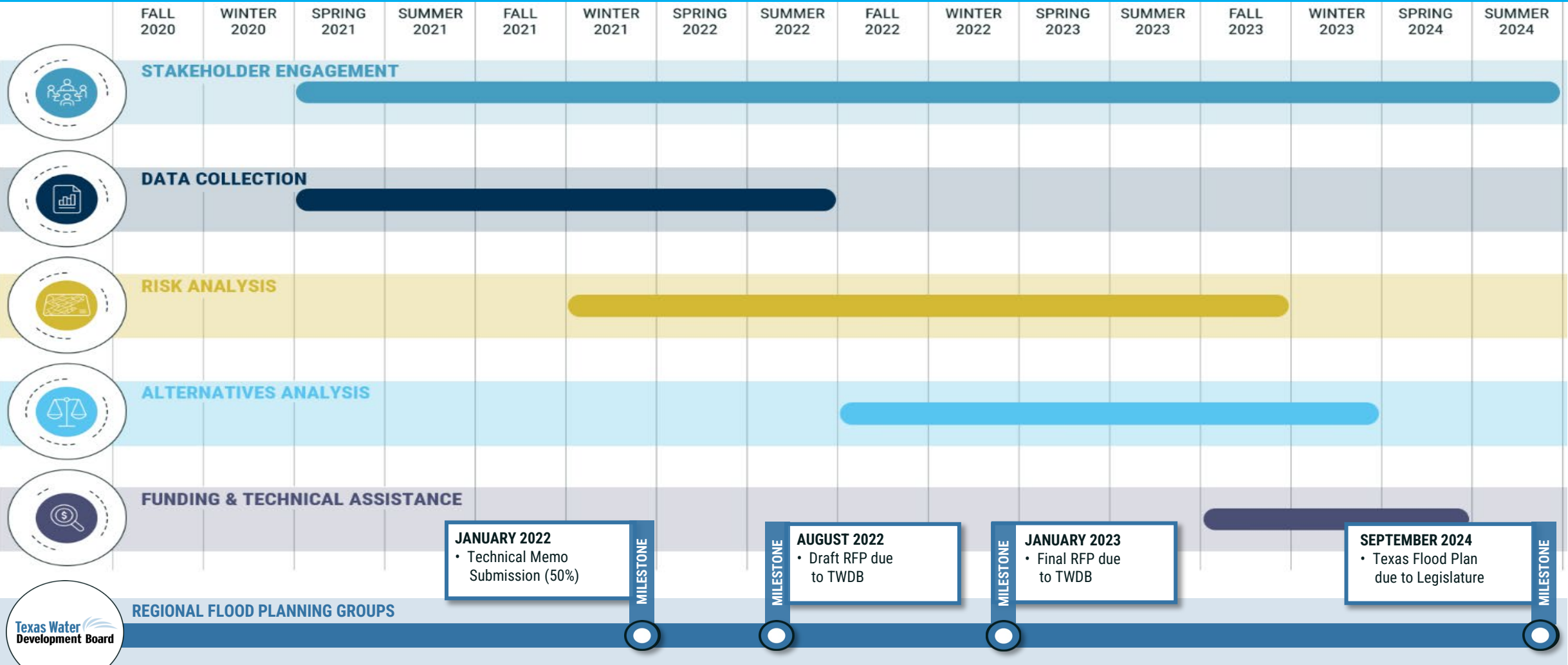
ACRONYMS

FMS: Flood Management Strategies
FME: Flood Management Evaluations
FMP: Flood Mitigation Projects

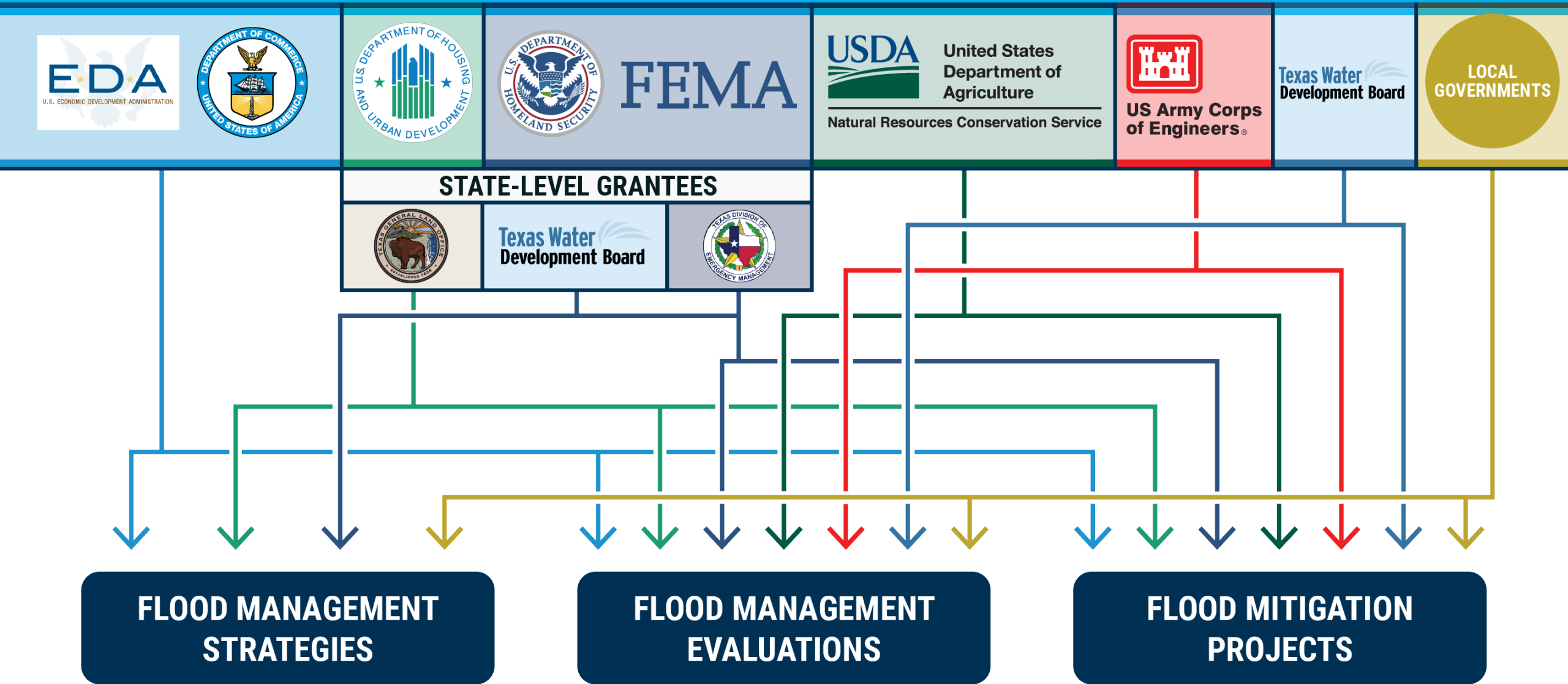
Study Timeline: RFPG Support



RIVER
BASIN
FLOOD
STUDY
WESTERN
REGION



Identification of Project Funding



Texas Disaster Information System (TDIS)



RIVER
BASIN
FLOOD
STUDY
WESTERN
REGION

- Data and information produced by the GLO's Combined River Basin Flood Studies program will inform TDIS.
- TDIS will house critical flood risk information through an accessible online dashboard to support preparedness, response, recovery, and mitigation for Texas.
- Provides users with the most current and accurate information available to assess related disaster risks, impacts, and mitigation strategies.
- Texas A&M University Systems (TAMUS) will house the disaster database.

Outreach Next Steps



RIVER
BASIN
FLOOD
STUDY
WESTERN
REGION

Information Sharing

- We will push information out via the West Flood Studies mailbox
- We will share information across our technical and communication teams
- We will coordinate and collaborate with you



For general questions about the study, email us!

GLOfloodstudies.west@recovery.texas.gov

Engagement

- Multiple opportunities over the next 3 years
- Currently underway: workshops and initial calls from your GLO IGR reps and the West Outreach Team

Questions?



**RIVER
BASIN
FLOOD
STUDY**
WESTERN
REGION

Western Region Outreach Team

GLOfloodstudies.west@recovery.texas.gov